

SECTION 18, T.6N., R.1W., S.L.B. & M.

IN OGDEN CITY

TAXING UNIT: 358, 359

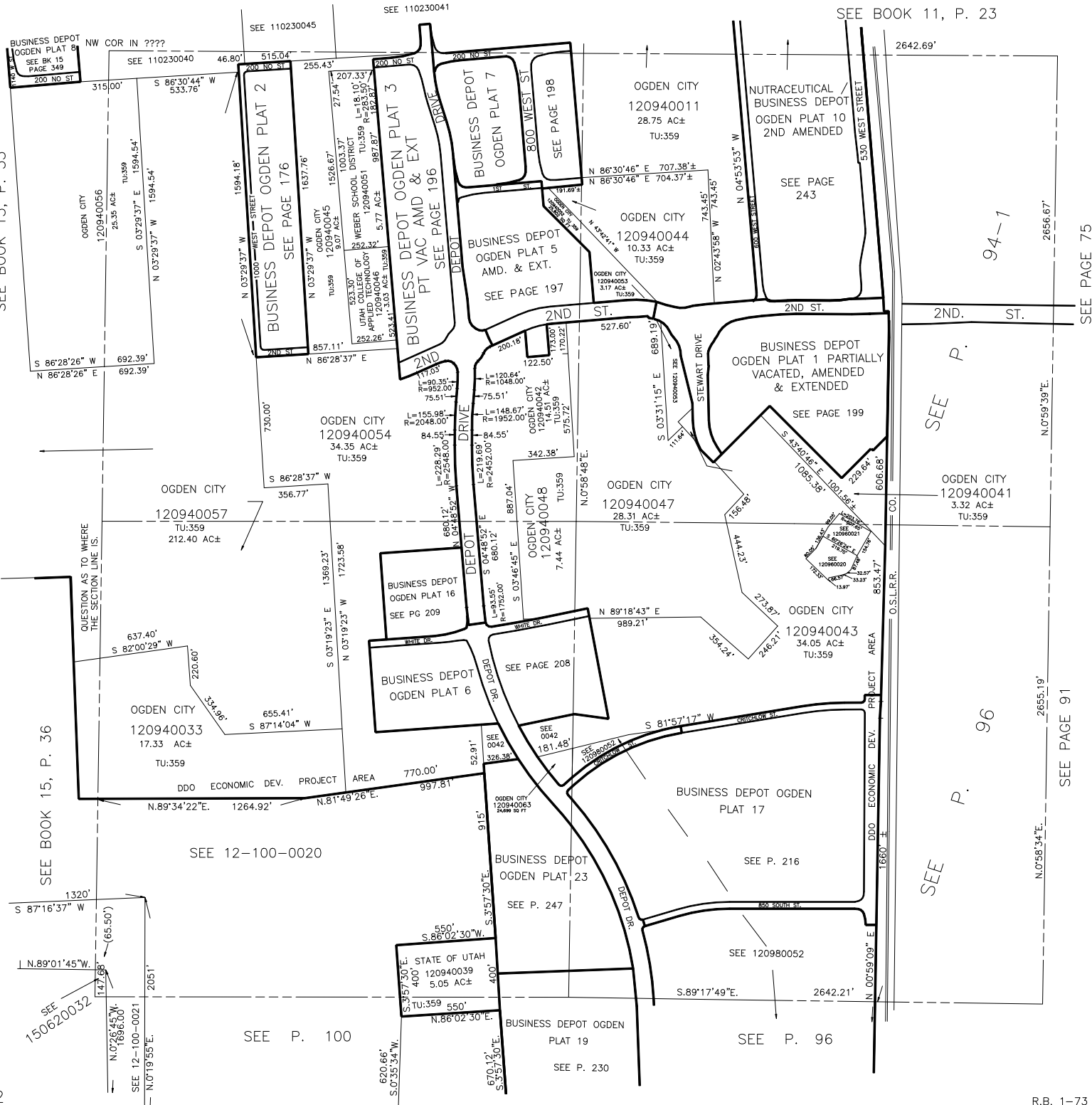
SCALE 1" = 400'

SEE BOOK 11, P. 23

SEE BOOK 15, P. 35

SEE BOOK 15, P. 36

12



94-1

SEE P.

96

SEE P.

SEE PAGE 75

SEE PAGE 91